

**Fórum
de Tecidos**
Técnicos
& Inovadores

**Textiles
Forum**
Technical
and Innovative
Fabrics

EMPRESA COMPANY

LMA

PESSOA DE CONTACTO CONTACT PERSON

Filipa Silva Pereira

EMAIL

filipa.alexandra@lma.pt

WEBSITE

www.lma.pt

REFERÊNCIA FABRIC REFERENCE

P0543/15-FPLWP12

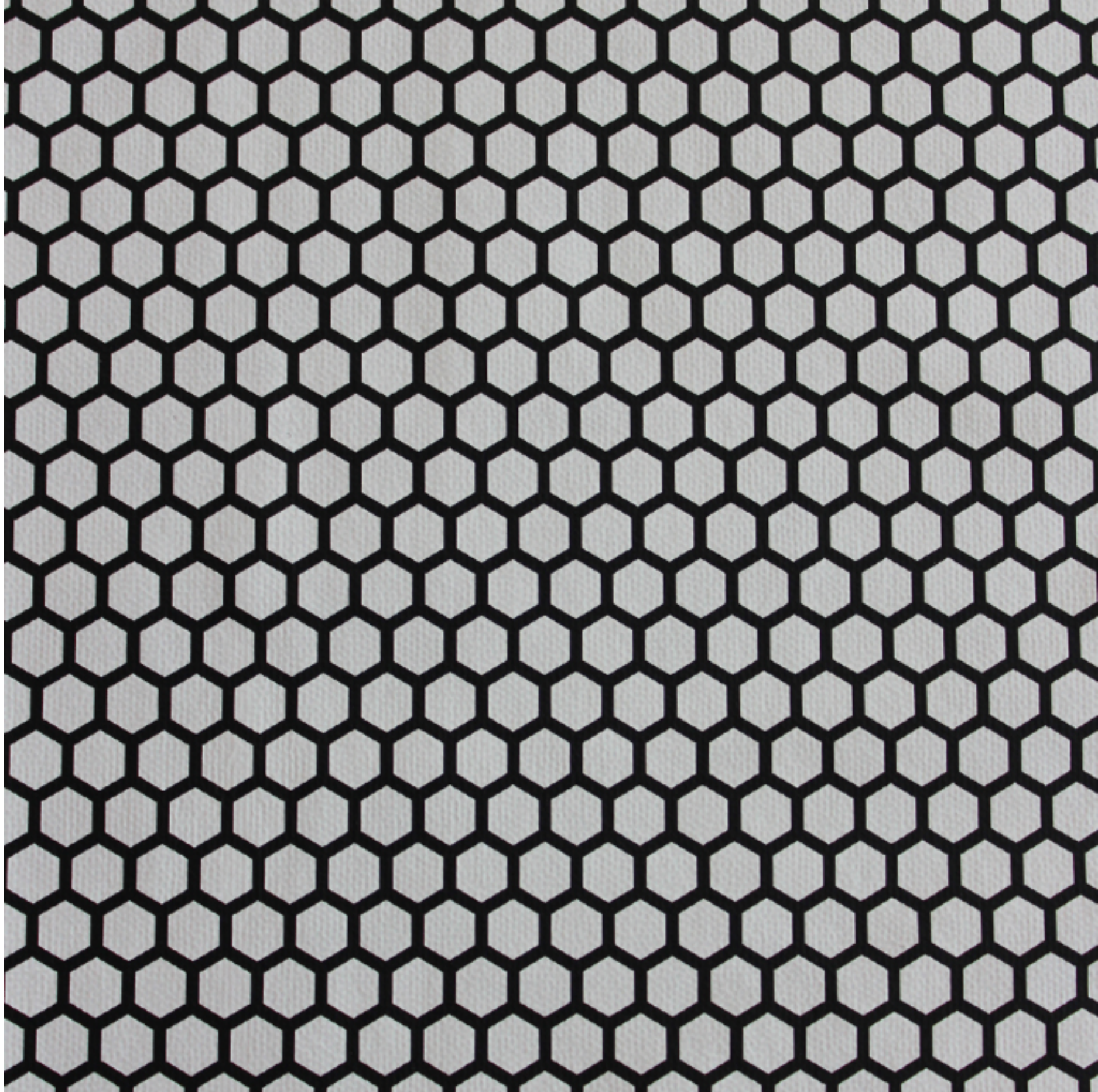
COMPOSIÇÃO COMPOSITION

88% Hollow Polypropylene, 12% Poliurethane

GRAMAGEM WEIGHT (GR/M²)

130





APLICAÇÃO APPLICATION

VESTUÁRIO DESPORTO SPORTS CLOTHING

Camada Exterior ▪ *Outer Layer*

TECNOMODA TECHNO-FASHION





FUNCIONALIDADES FUNCTIONALITIES

Respirável ▪ *Breathable*
Impermeável ▪ *Water Proof*
Antibacteriano ▪ *Antimicrobial*
Secagem Rápida ▪ *Fast Dry*
Leveza Extrema ▪ *Extreme Light*



FATORES DE DIFERENCIAÇÃO

INNOVATION STATEMENT

«Lightweight – Thermal regulating – Breathable – Eco-friendly – Waterproof – Water repellent – Windproof. Ultra-light breathable, wind and waterproof softshell combined with an ultra-light thermal eco hollow polypropylene. Polar fleece for climatic protection. Protect body's warmth from chilling effects.»

Informação da responsabilidade da empresa | Information provided by the company

STAND MODTISSIMO:

T304



iTechStyle
Innovation Business Forum



citeve

